

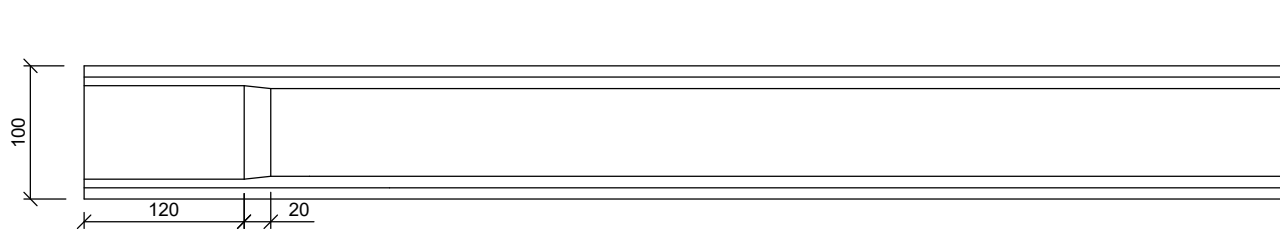


TRAVE IN C.A.P TIPO DOPPIO T 118-118/100H  
SEZIONI TRASVERSALI, DETTAGLI E PIANTA

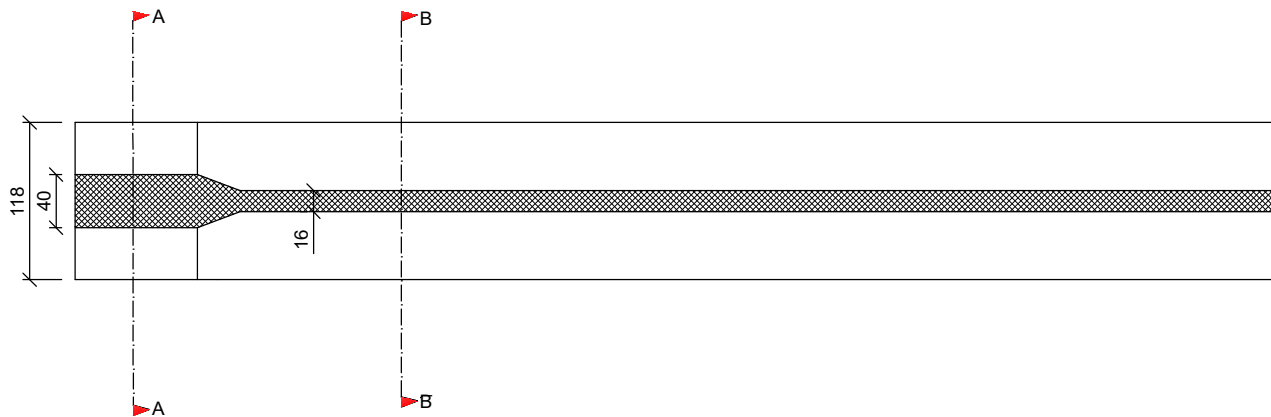
Dettaglio Testata

LUNGH. TRAVE \_\_\_\_\_/2

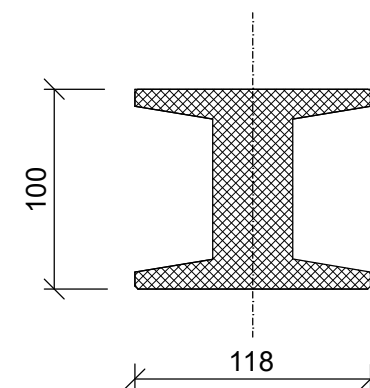
1/2 PROSPETTO LONGITUDINALE



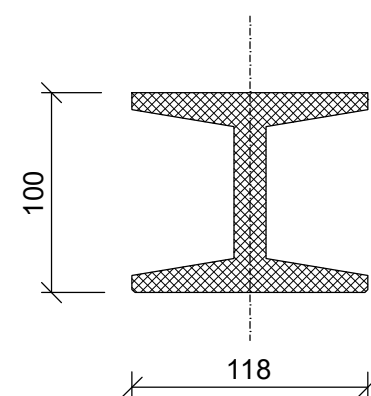
1/2 PIANTA



Sezione A-A



Sezione B-B



N.B.: LUNGH. TRAVI IN FUNZIONE DEI CARICHI  
LUNGH. ORDINARIA MAX ml 20,00

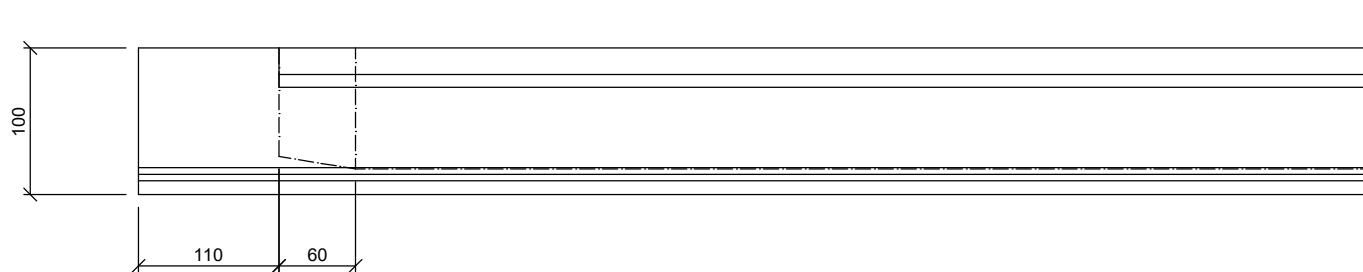


TRAVE IN C.A.P TIPO OMEGA 248-248/100H  
SEZIONI TRASVERSALI, DETTAGLI E PIANTA

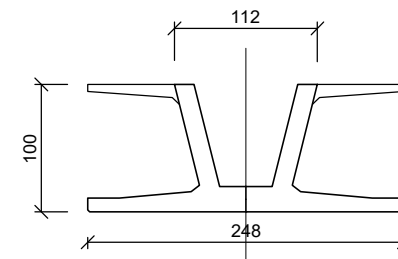
Dettaglio Testata

LUNGH. TRAVE \_\_\_\_\_/2

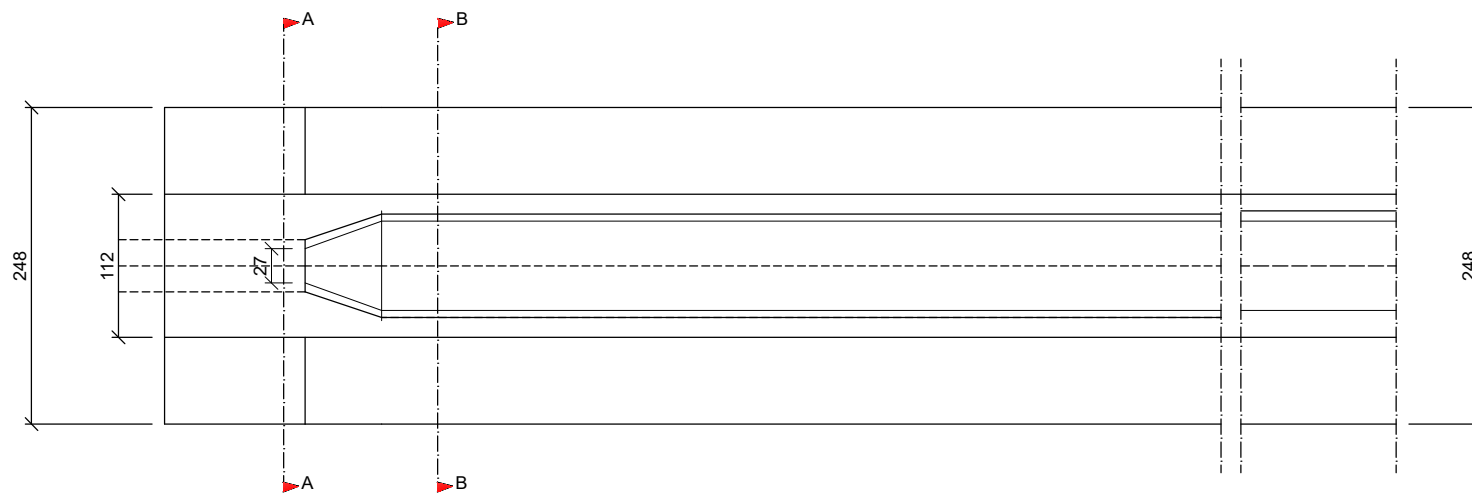
1/2 PROSPETTO LONGITUDINALE



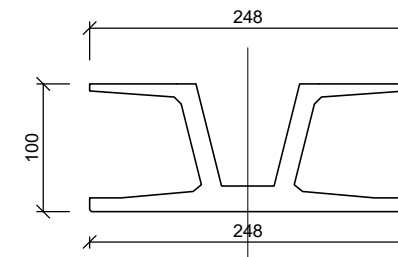
Sezione di TESTATA



1/2 PIANTA



Sezione CORRENTE



N.B.: LUNGH. TRAVI IN FUNZIONE DEI CARICHI  
LUNGH. ORDINARIA MAX ml 20,00



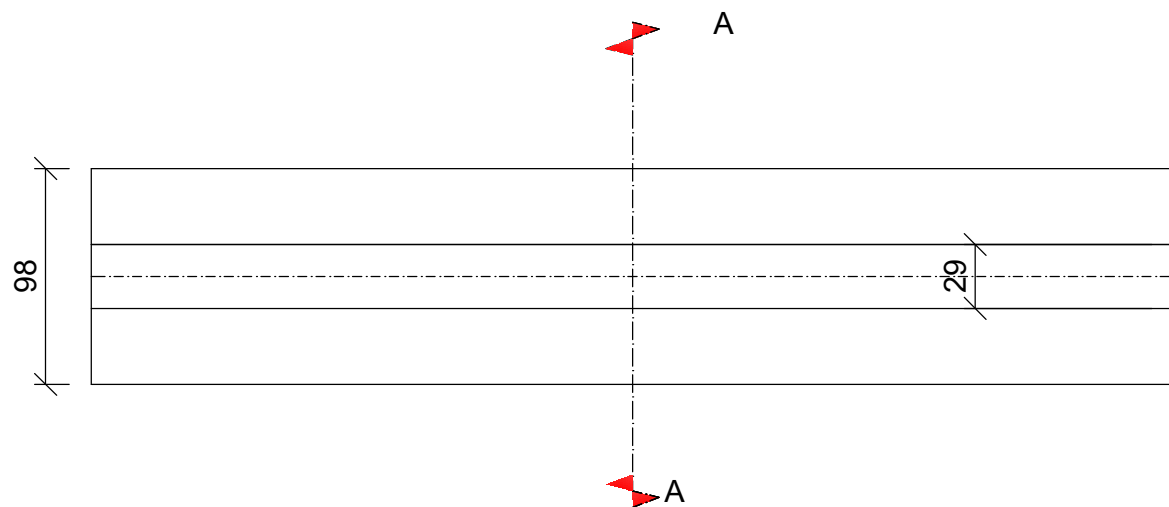
TRAVE IN C.A.P BASE 98/Var.40-70H (Anima 29)  
SEZIONI TRASVERSALI, PIANTA E DETTAGLI

Dettaglio Testata  
LUNGH. TRAVE \_\_\_\_\_/2

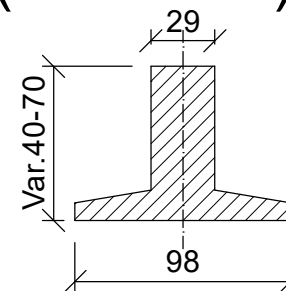
1/2 PROSPETTO LONGITUDINALE



1/2 PIANTA



Sezione A-A  
98/var.40-70H  
(Anima 29)



mc/ml 0.26

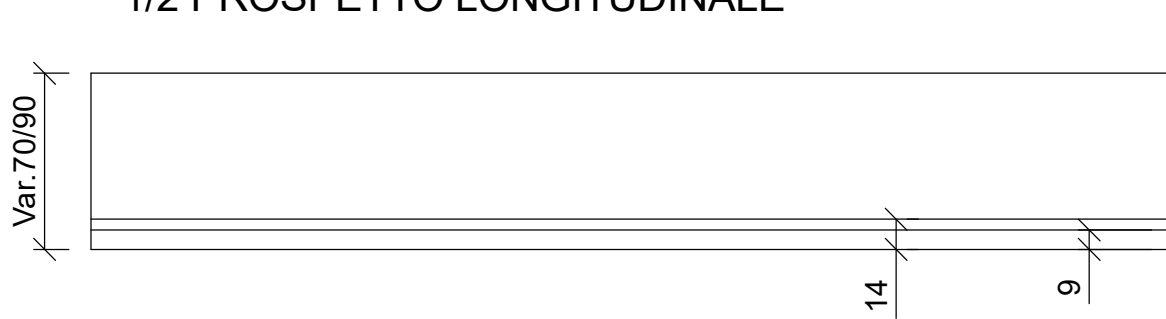


TRAVE IN C.A.P BASE 98/var.70-90 (Anima 29)  
SEZIONI TRASVERSALI, PIANTA E DETTAGLI

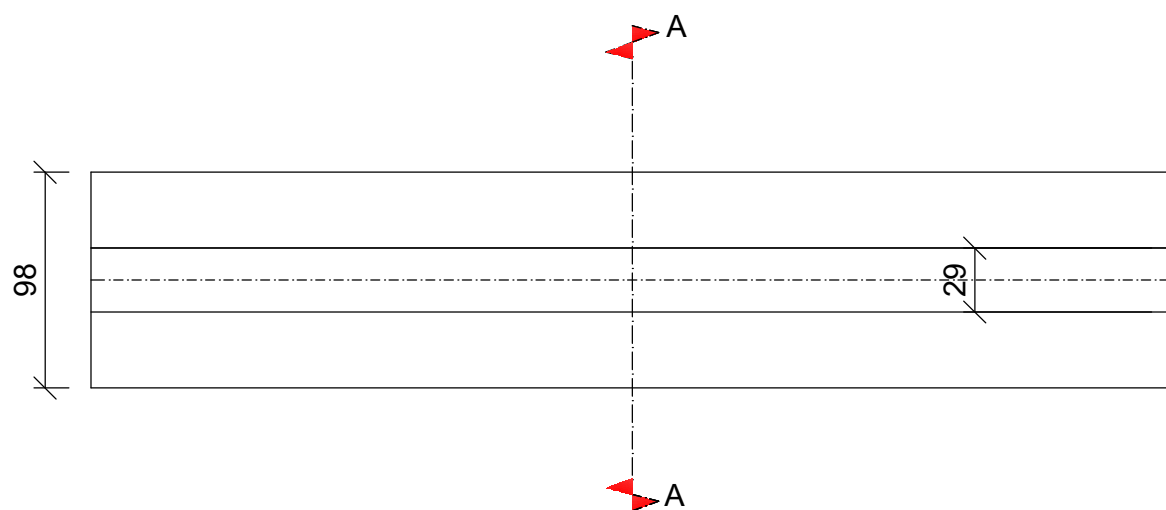
Dettaglio Testata

LUNGH. TRAVE \_\_\_\_\_/2

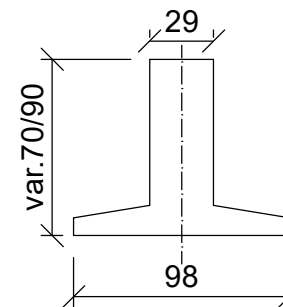
1/2 PROSPETTO LONGITUDINALE



1/2 PIANTA



Sezione A-A  
98/Var 70-90H(Anima 29)



mc/ml 0.29

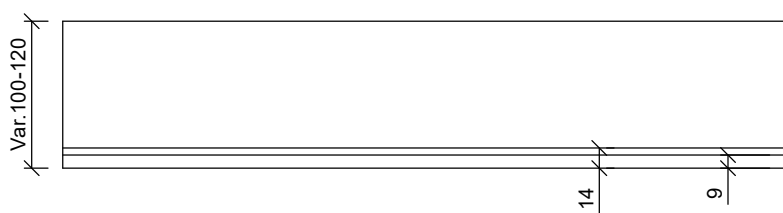


TRAVE IN C.A.P BASE 98/var.100-120H (Anima 29)  
SEZIONI TRASVERSALI, PIANTA E DETTAGLI

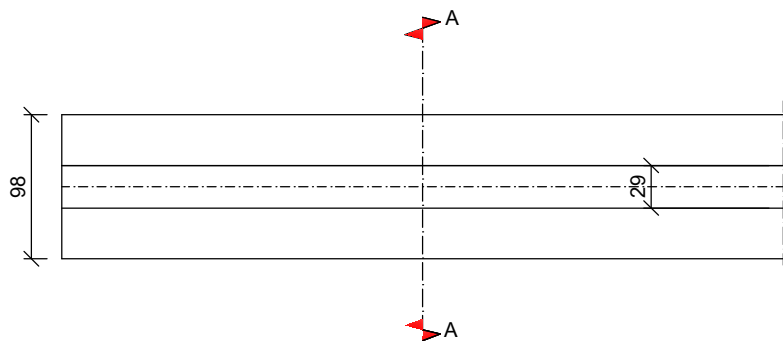
Dettaglio Testata

LUNGH. TRAVE \_\_\_\_\_/2

1/2 PROSPETTO LONGITUDINALE

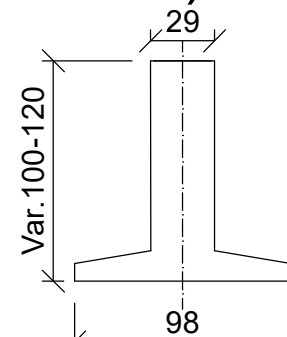


1/2 PIANTA



Sezione A-A

98/Var.100-120H  
(Anima 29)

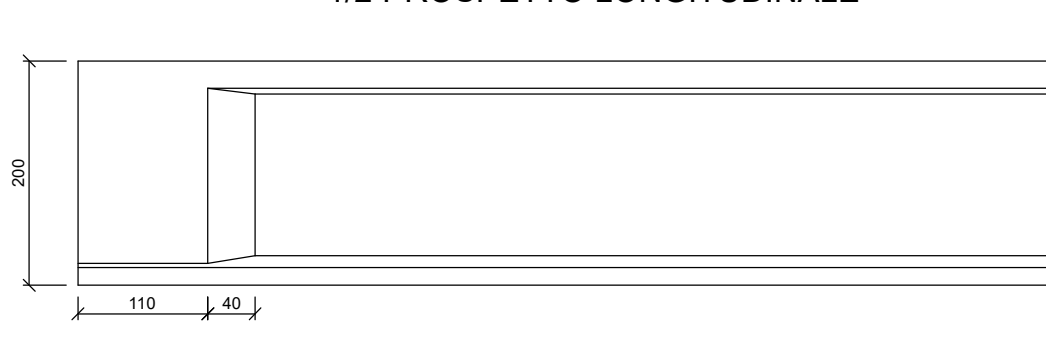


mc/ml 0.34

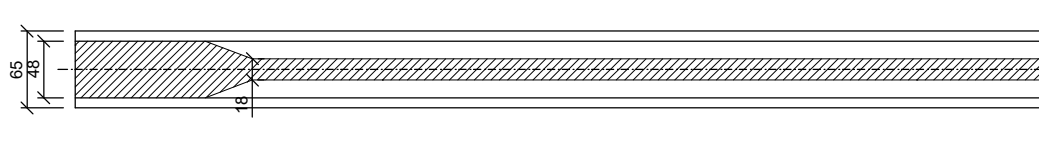


TRAVE IN C.A.P TIPO 65/200 H  
SEZIONI TRASVERSALI, DETTAGLI E PIANTA

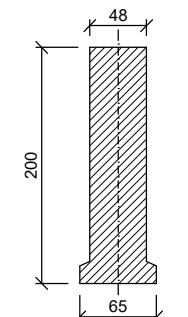
Dettaglio Testata  
LUNGH. TRAVE \_\_\_\_\_/2  
1/2 PROSPETTO LONGITUDINALE



1/2 PIANTA

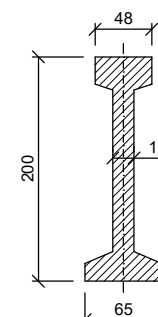


Sezione A-A



mc/ml 1.00

Sezione B-B



mc/ml 0.51

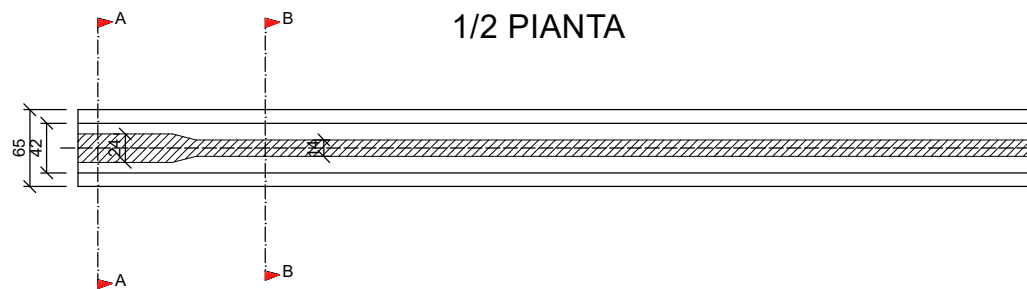
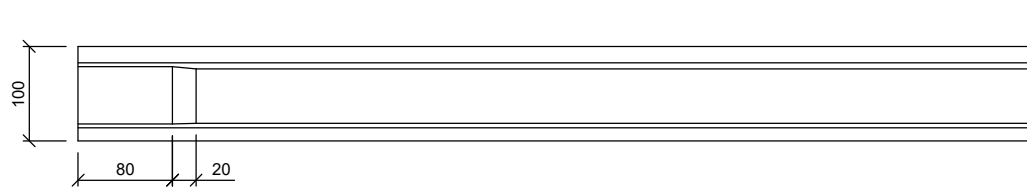


TRAVE IN C.A.P TIPO 65/100 H  
SEZIONI TRASVERSALI, DETTAGLI E PIANTA

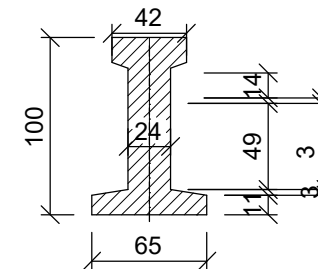
Dettaglio Testata

LUNGH. TRAVE \_\_\_\_\_/2

1/2 PROSPETTO LONGITUDINALE

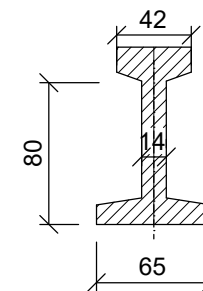


Sezione A-A



mc/ml 0.272

Sezione B-B



mc/ml 0.225

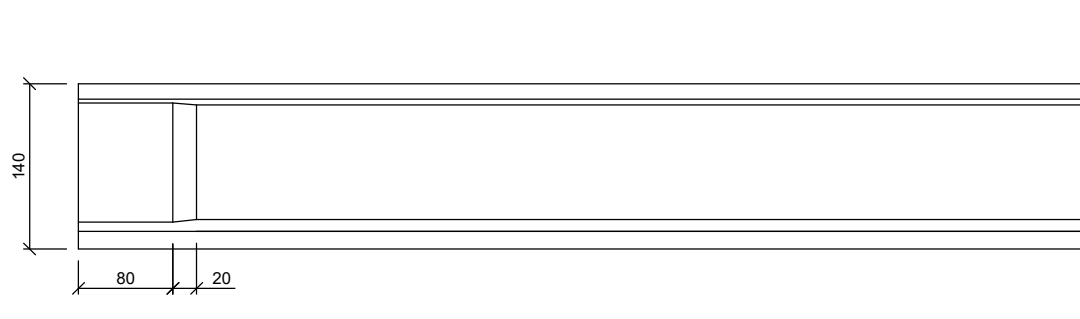


TRAVE IN C.A.P TIPO 65/140 H  
SEZIONI TRASVERSALI, DETTAGLI E PIANTA

Dettaglio Testata

LUNGH. TRAVE \_\_\_\_\_/2

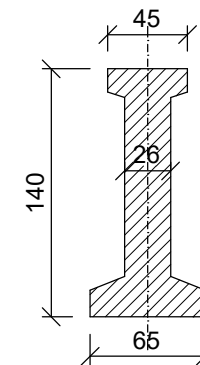
1/2 PROSPETTO LONGITUDINALE



1/2 PIANTA

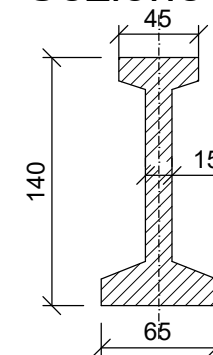


Sezione A-A



mc/ml 0.46

Sezione B-B



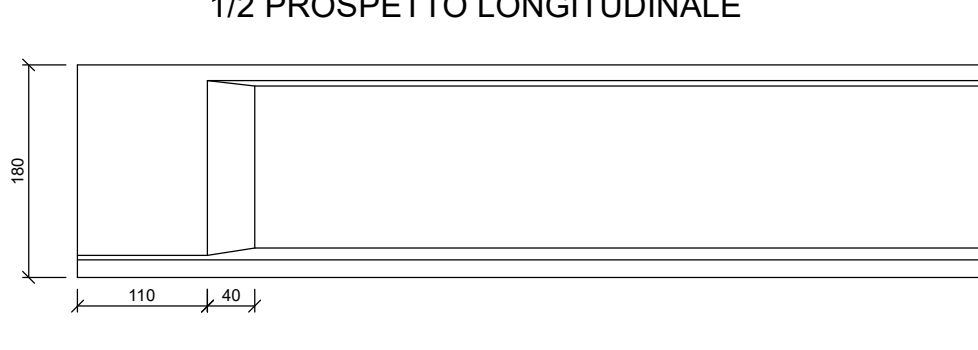
mc/ml 0.36



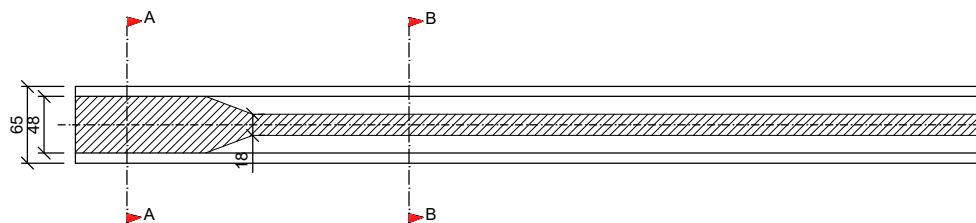


TRAVE IN C.A.P TIPO 65/180 H  
SEZIONI TRASVERSALI, DETTAGLI E PIANTA

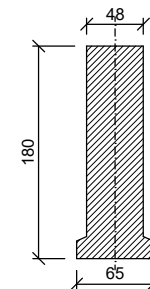
Dettaglio Testata  
LUNGH. TRAVE \_\_\_\_\_/2  
1/2 PROSPETTO LONGITUDINALE



1/2 PIANTA

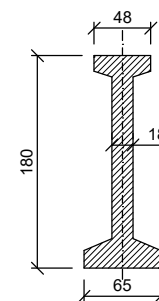


Sezione A-A



mc/ml 0.89

Sezione B-B



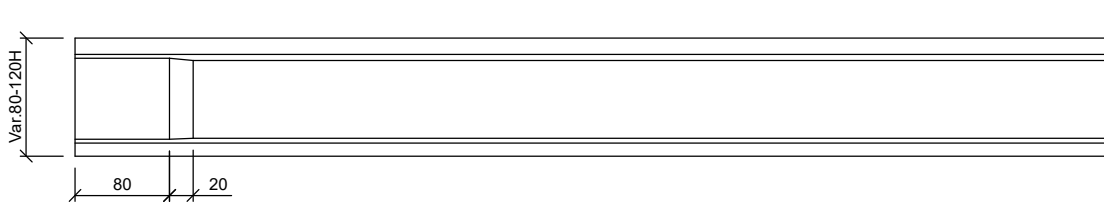
mc/ml 0.46



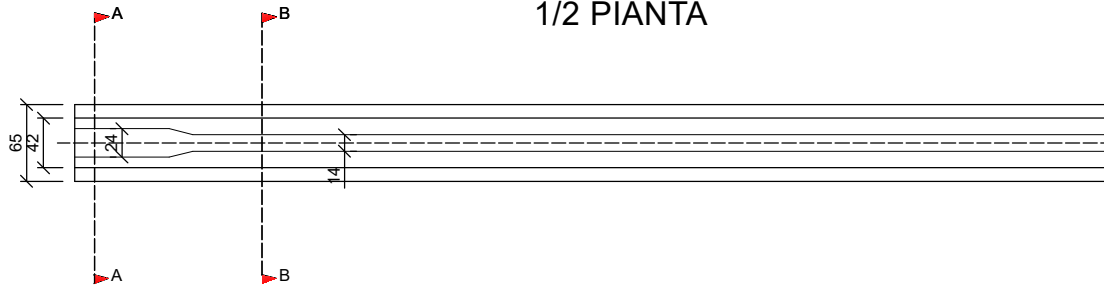
TRAVE IN C.A.P TIPO 65/Var.80-120 H  
SEZIONI TRASVERSALI, DETTAGLI E PIANTA

Dettaglio Testata  
LUNGH. TRAVE \_\_\_\_\_/2

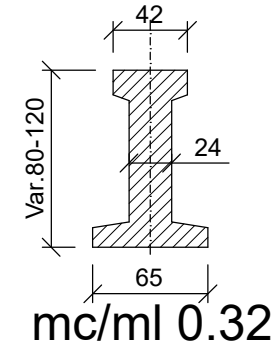
1/2 PROSPETTO LONGITUDINALE



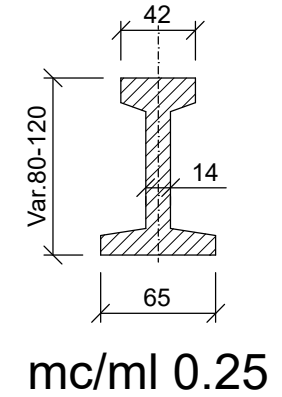
1/2 PIANTA



Sezione A-A



Sezione B-B



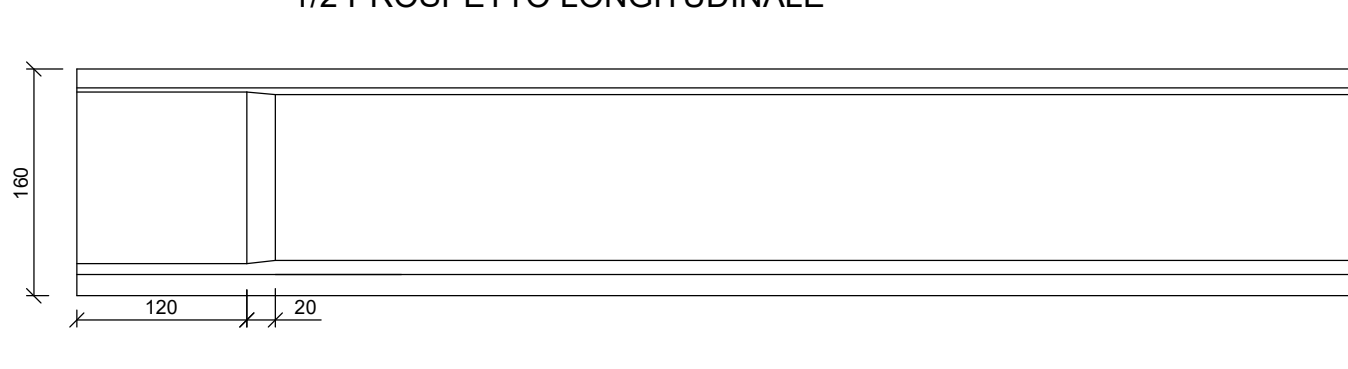


TRAVE IN C.A.P TIPO 65/160 H  
SEZIONI TRASVERSALI, DETTAGLI E PIANTA

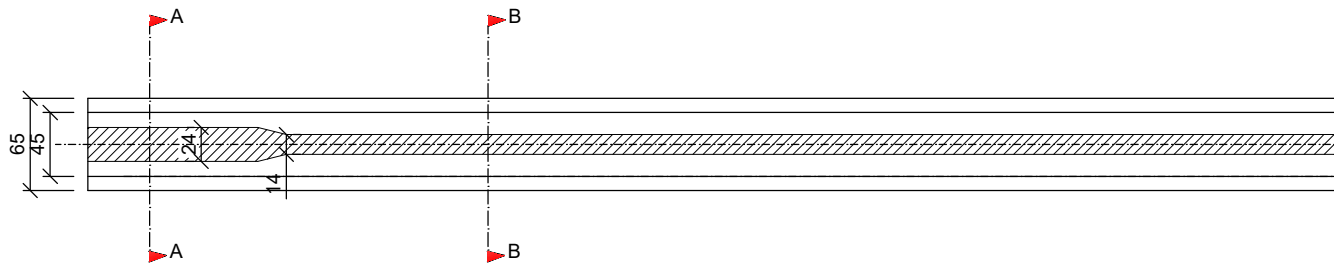
Dettaglio Testata

LUNGH. TRAVE \_\_\_\_\_/2

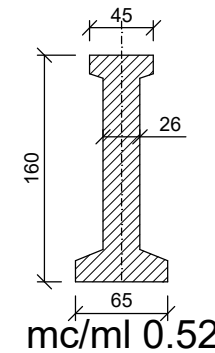
1/2 PROSPETTO LONGITUDINALE



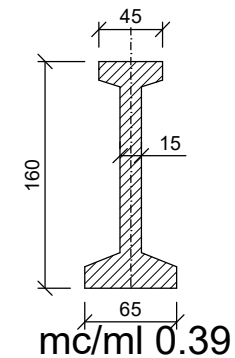
1/2 PIANTA



Sezione A-A



Sezione B-B





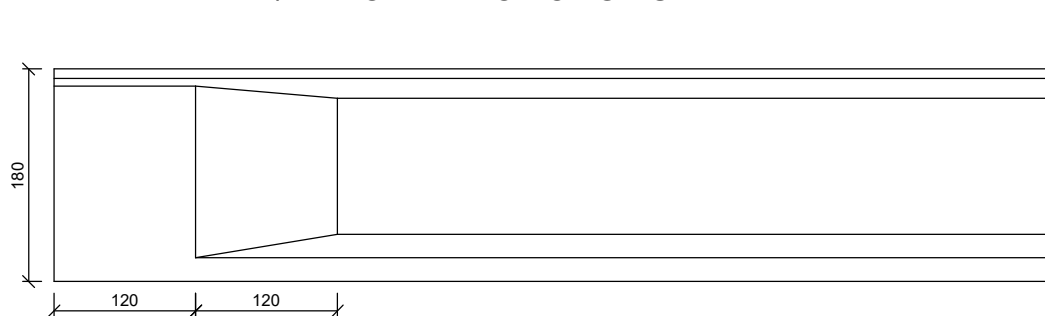
TRAVE IN C.A.P TIPO 90/180 H R

SEZIONI TRASVERSALI, DETTAGLI E PIANTA

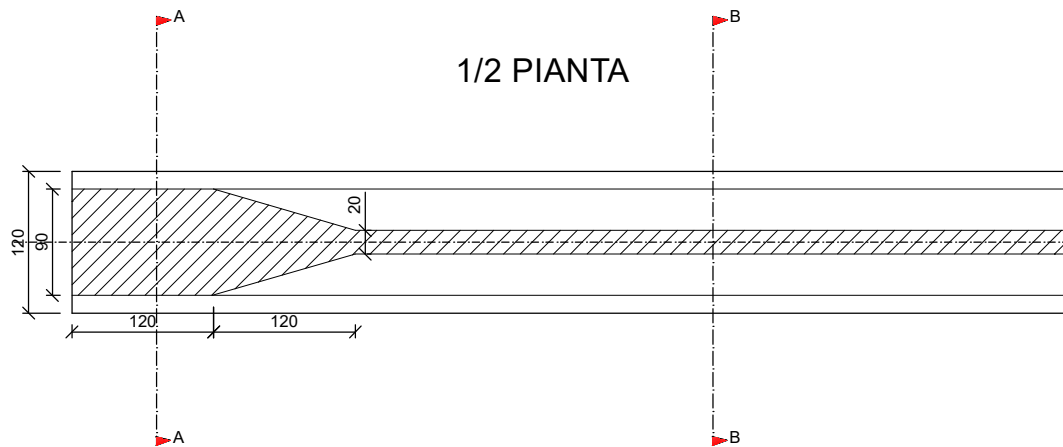
Dettaglio Testata

LUNGH. TRAVE \_\_\_\_\_/2

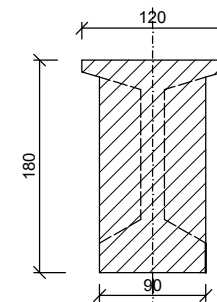
1/2 PROSPETTO LONGITUDINALE



1/2 PIANTA

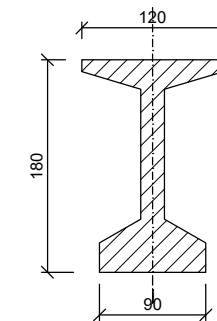


Sezione A-A



MC/ML 1.65

Sezione B-B



MC/ML 0.78



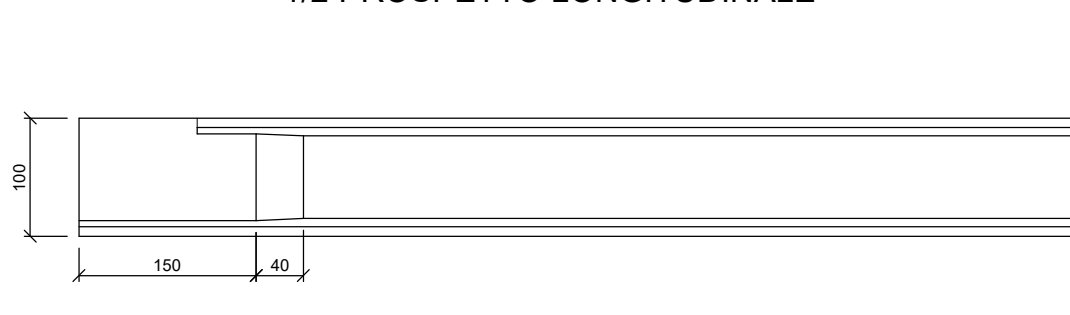
TRAVE IN C.A.P TIPO 98/100 H AD ALI UGUALI

SEZIONI TRASVERSALI, DETTAGLI E PIANTA

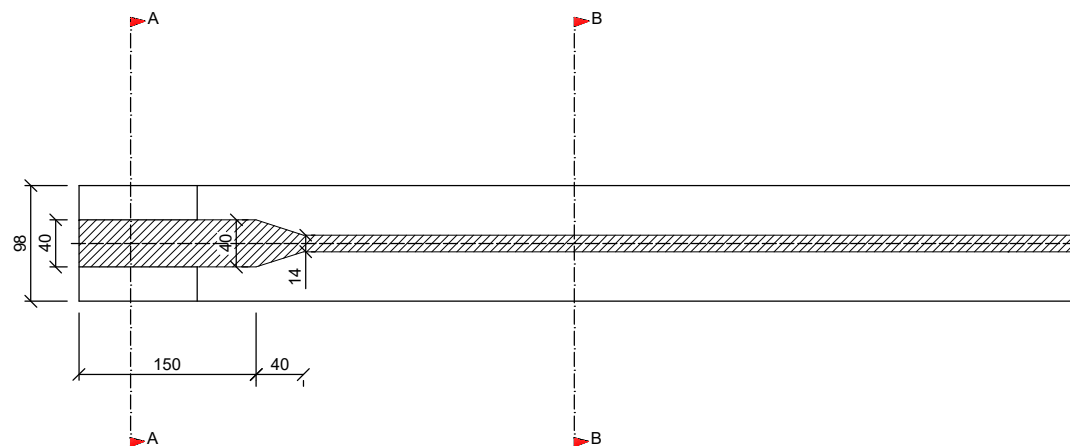
Dettaglio Testata

LUNGH. TRAVE \_\_\_\_\_/2

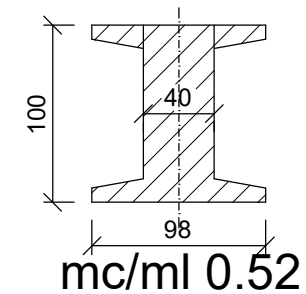
1/2 PROSPETTO LONGITUDINALE



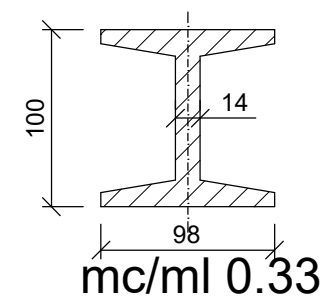
1/2 PIANTA



Sezione A-A



Sezione B-B





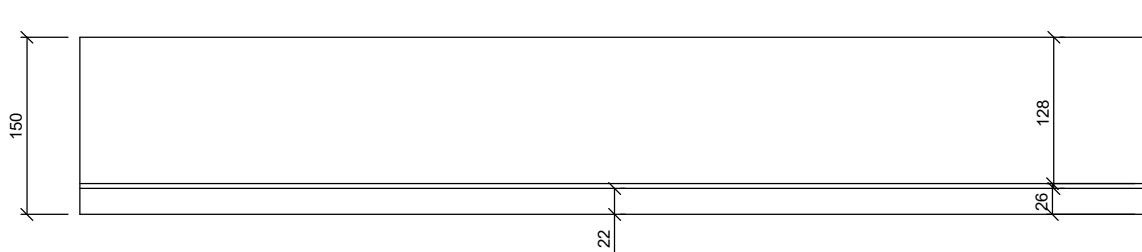
TRAVE IN C.A.P TIPO 123/150 H

SEZIONI TRASVERSALI, DETTAGLI E PIANTA

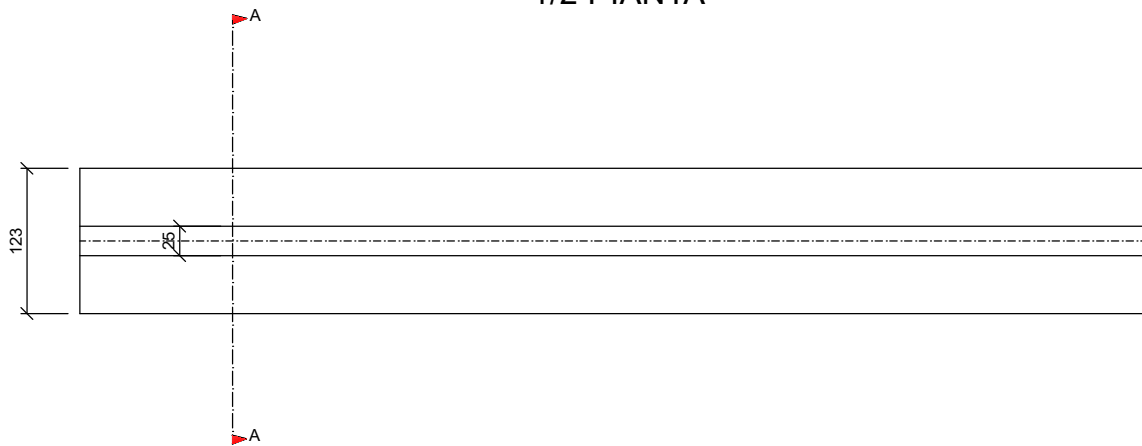
Dettaglio Testata

LUNGH. TRAVE \_\_\_\_\_/2

1/2 PROSPETTO LONGITUDINALE

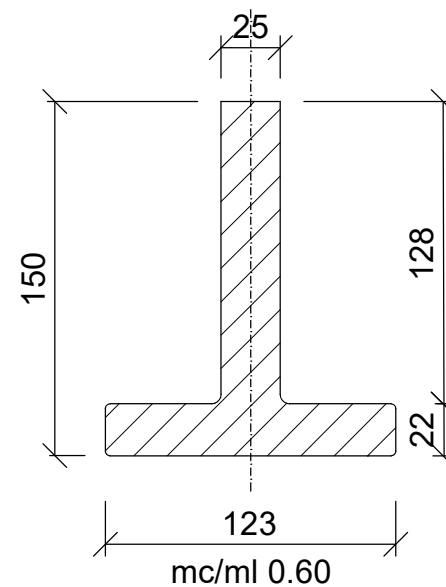


1/2 PIANTA



Sezione A-A

Sezione Corrente



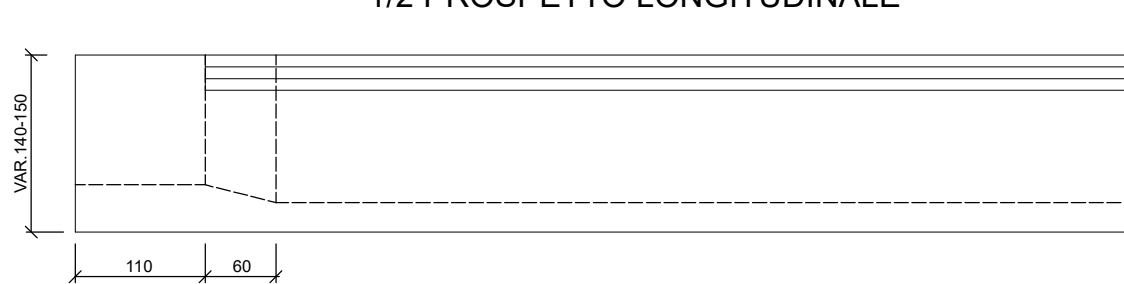


TRAVE IN C.A.P TIPO CASSONE 100/Var.140-150H

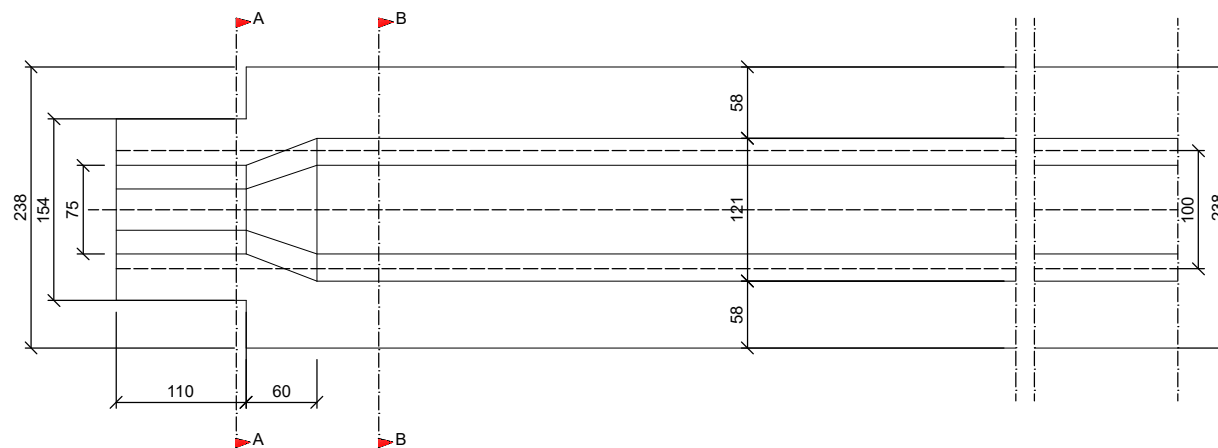
SEZIONI TRASVERSALI, PIANTA E DETTAGLI

Dettaglio Testata  
LUNGH. TRAVE \_\_\_\_\_/2

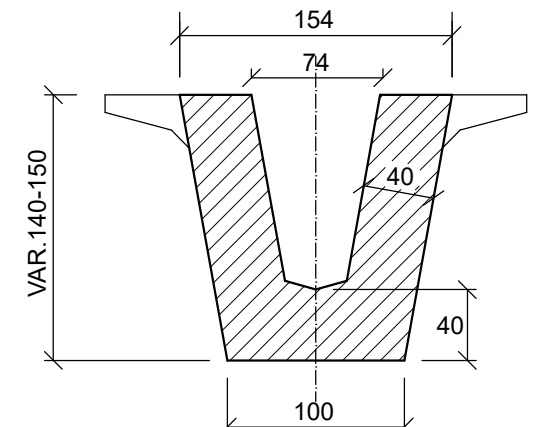
1/2 PROSPETTO LONGITUDINALE



1/2 PIANTA

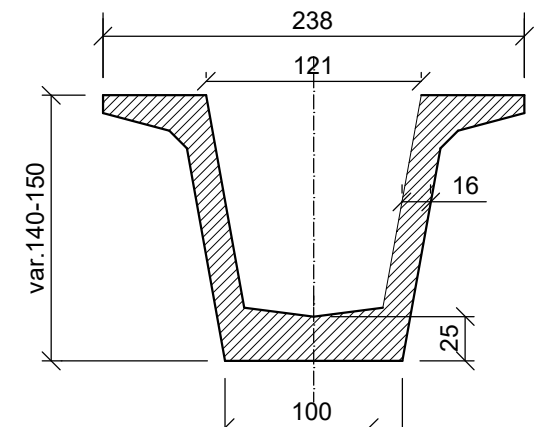


Sezione A-A



mc/ml 1.33

Sezione B-B

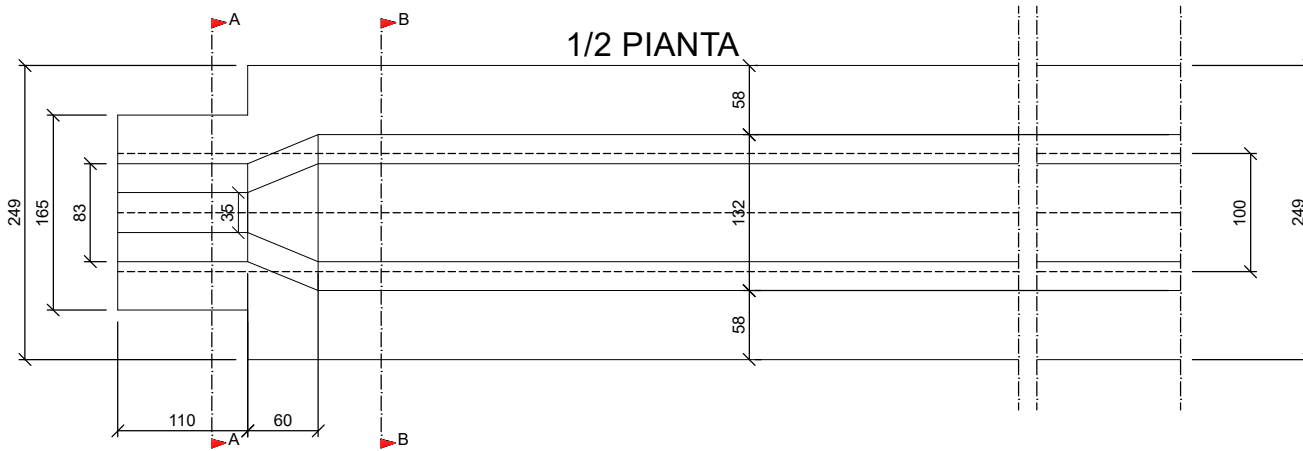
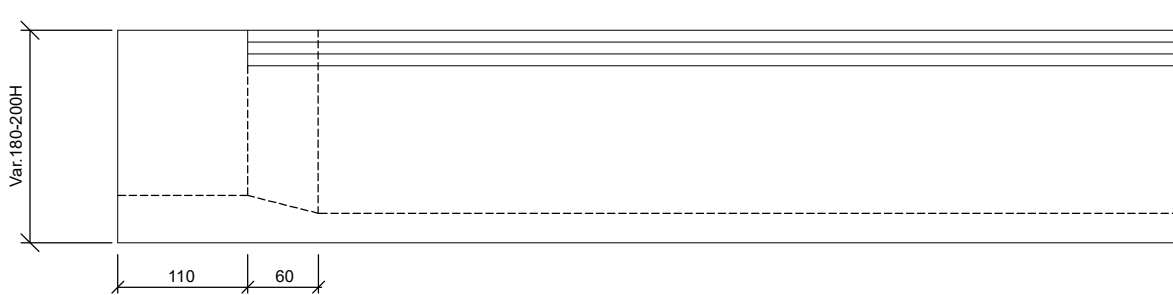


mc/ml 0.84

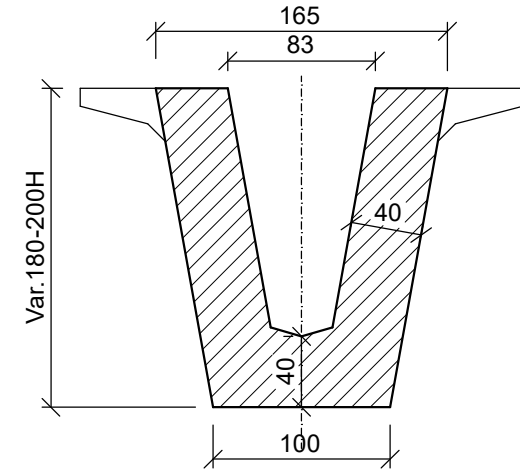


TRAVE IN C.A.P TIPO CASSONE 100/Var.180-200H  
SEZIONI TRASVERSALI, PIANTA E DETTAGLI

Dettaglio Testata  
LUNGH. TRAVE \_\_\_\_\_/2  
1/2 PROSPETTO LONGITUDINALE

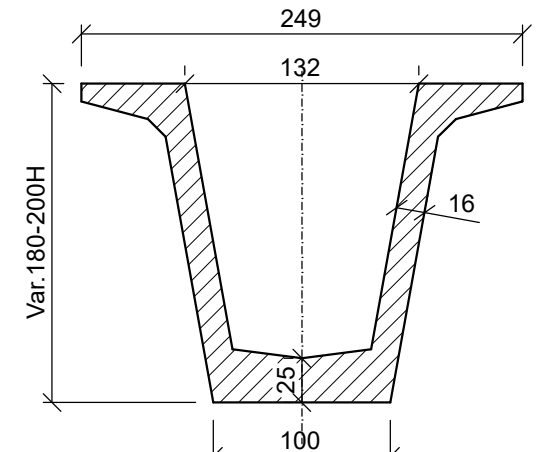


Sezione A-A



mc/ml 1.60

Sezione B-B



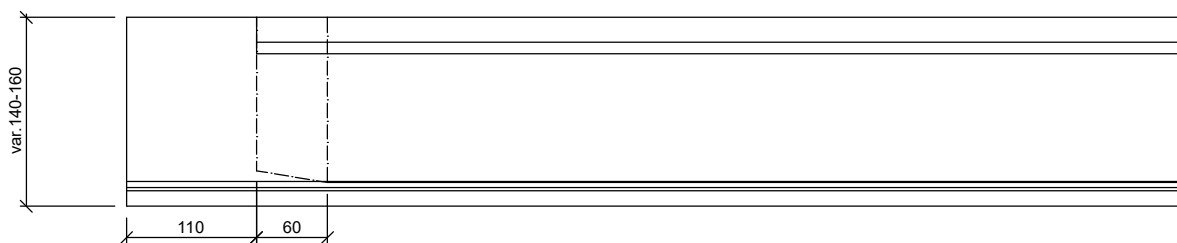
mc/ml 0.92



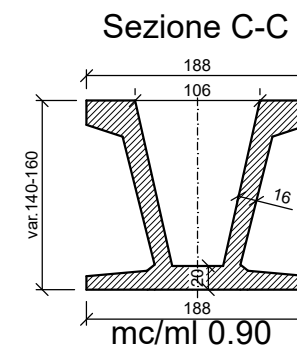
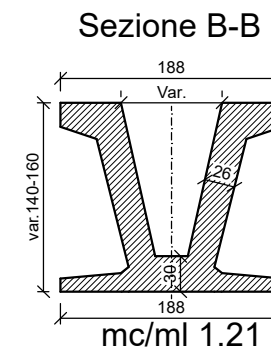
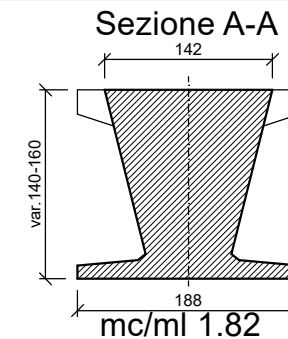
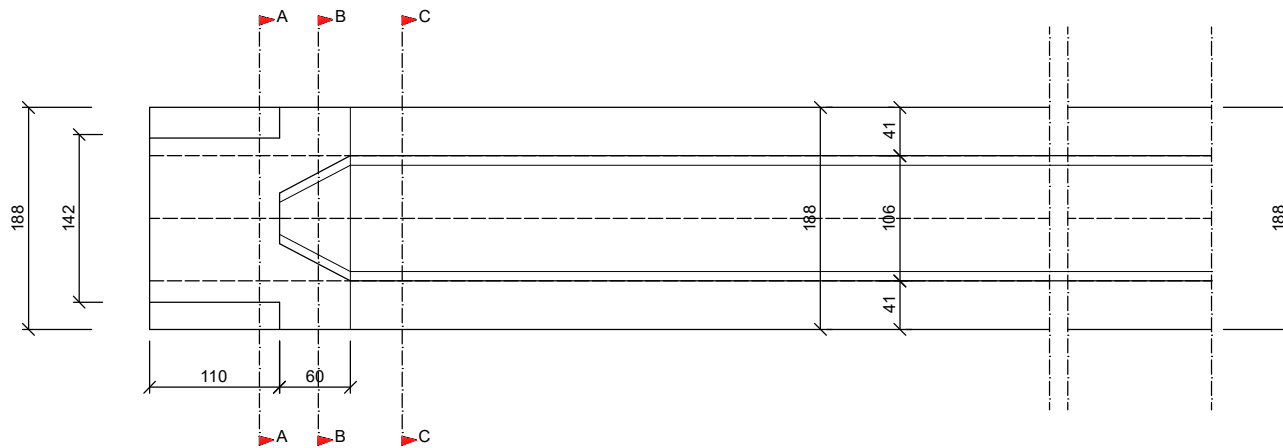


# TRAVE IN C.A.P TIPO CASSONE 188/Var.140-160H ALA LARGA INFERIORE SEZIONI TRASVERSALI,PIANTA E DETTAGLI

Dettaglio Testata  
LUNGH. TRAVE \_\_\_\_\_/2  
1/2 PROSPETTO LONGITUDINALE



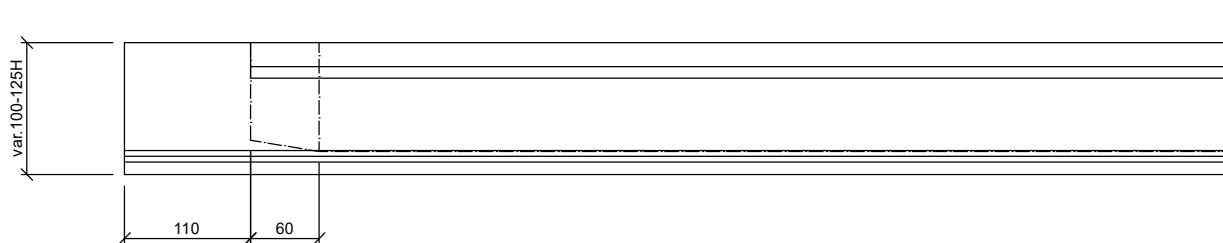
1/2 PIANTA



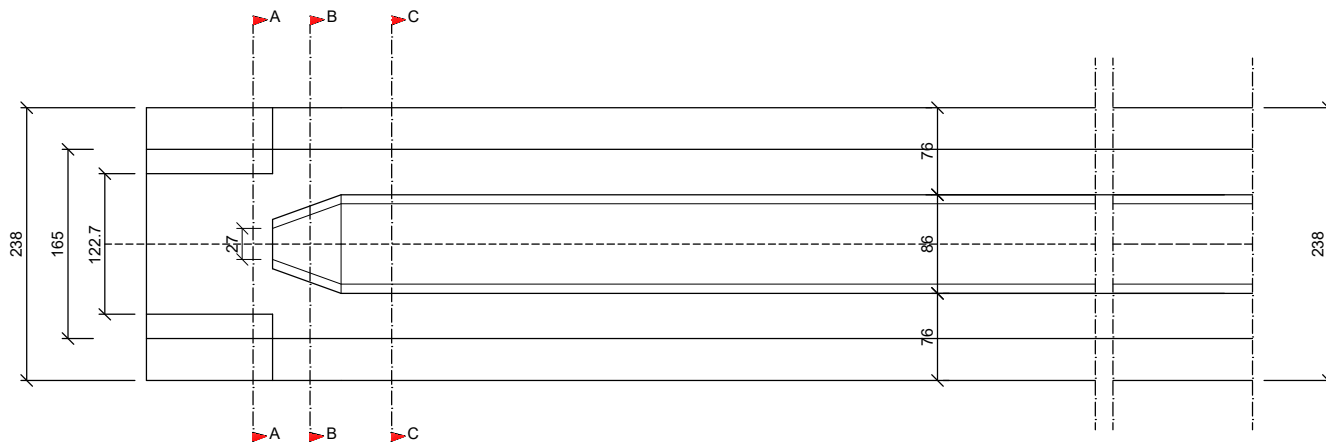


# TRAVE IN C.A.P TIPO CASSONE 238/Var.100-125H ALA LARGA INFERIORE SEZIONI TRASVERSALI,PIANTA E DETTAGLI

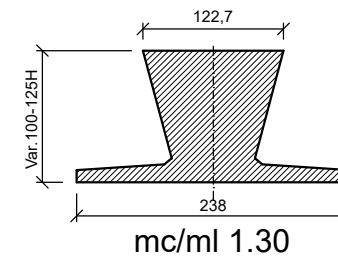
Dettaglio Testata  
LUNGH. TRAVE \_\_\_\_\_/2  
1/2 PROSPETTO LONGITUDINALE



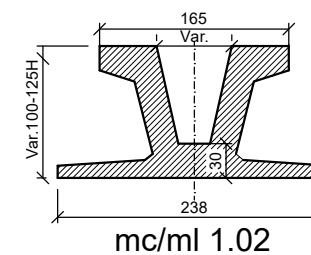
1/2 PIANTA



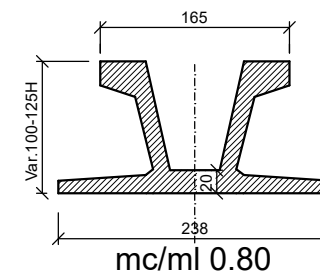
Sezione A-A



Sezione B-B



Sezione C-C





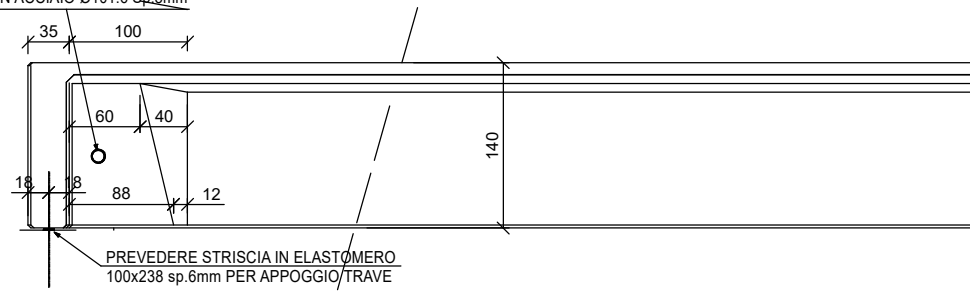
# TRAVE IN C.A.P TIPO 47-238/140 H SEZIONI TRASVERSALI, DETTAGLI E PIANTA

## Dettaglio Testata

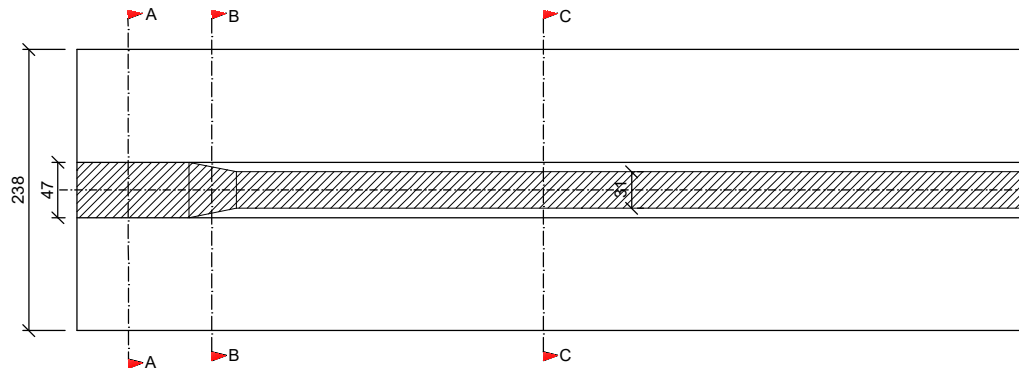
LUNGH. TRAVE \_\_\_\_\_/2

1/2 PROSPETTO LONGITUDINALE

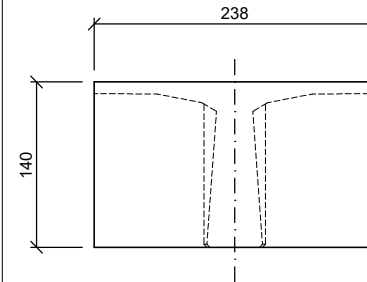
FORO Ø102 PER SOLLEVAMENTO TRAVE  
RIVESTITO INTERNAMENTE CON TUBO ZANCATO  
IN ACCIAIO Ø101.6 Sp.8mm



1/2 PIANTA

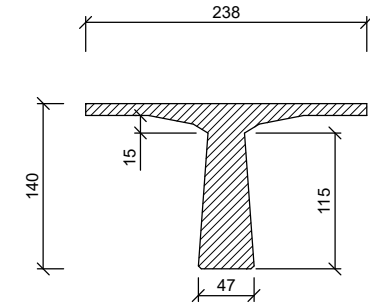


## Sezione A-A



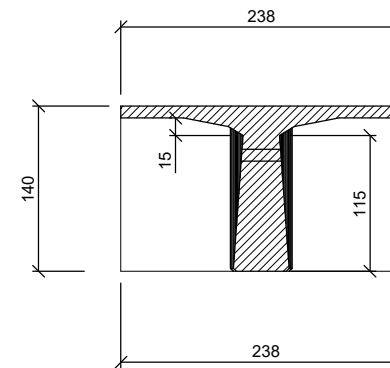
mc/ml 3,33

## Sezione B-B



mc/ml 0,79

## Vista C-C



mc/ml 0,79

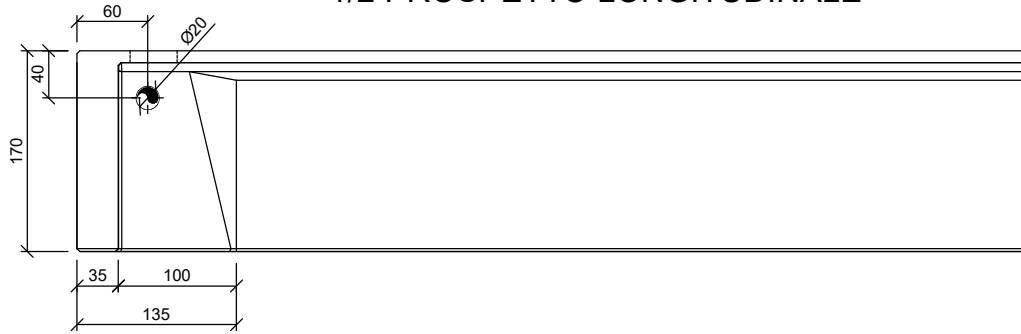


TRAVE IN C.A.P TIPO 47-238/170 H  
SEZIONI TRASVERSALI, DETTAGLI E PIANTA

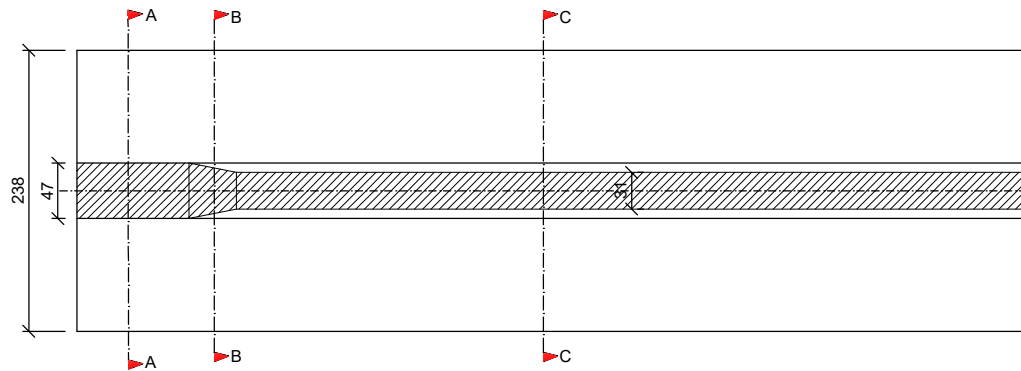
Dettaglio Testata

LUNGH. TRAVE \_\_\_\_\_/2

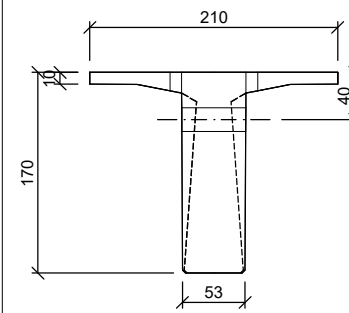
1/2 PROSPETTO LONGITUDINALE



1/2 PIANTA

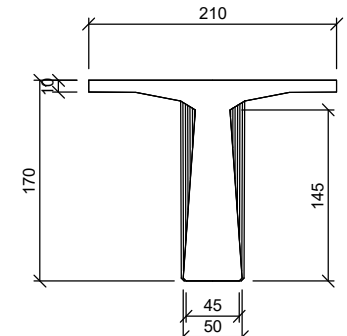


Sezione A-A



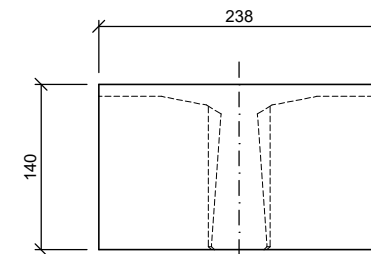
mc/ml 1.10

Sezione B-B



mc/ml 0,90

Vista C-C



mc/ml 3,33

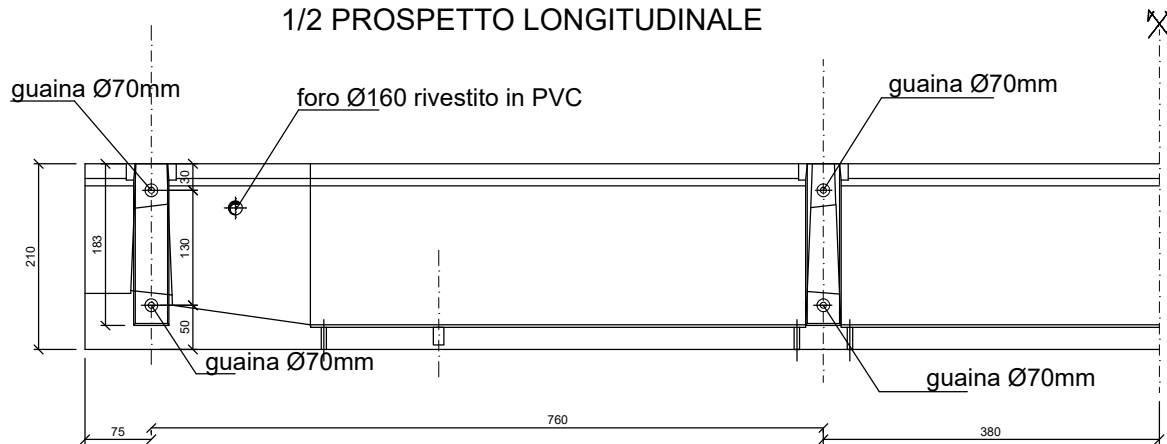


# TRAVE IN C.A.P TIPO 140/210H SEZIONI TRASVERSALI, DETTAGLI E PIANTA

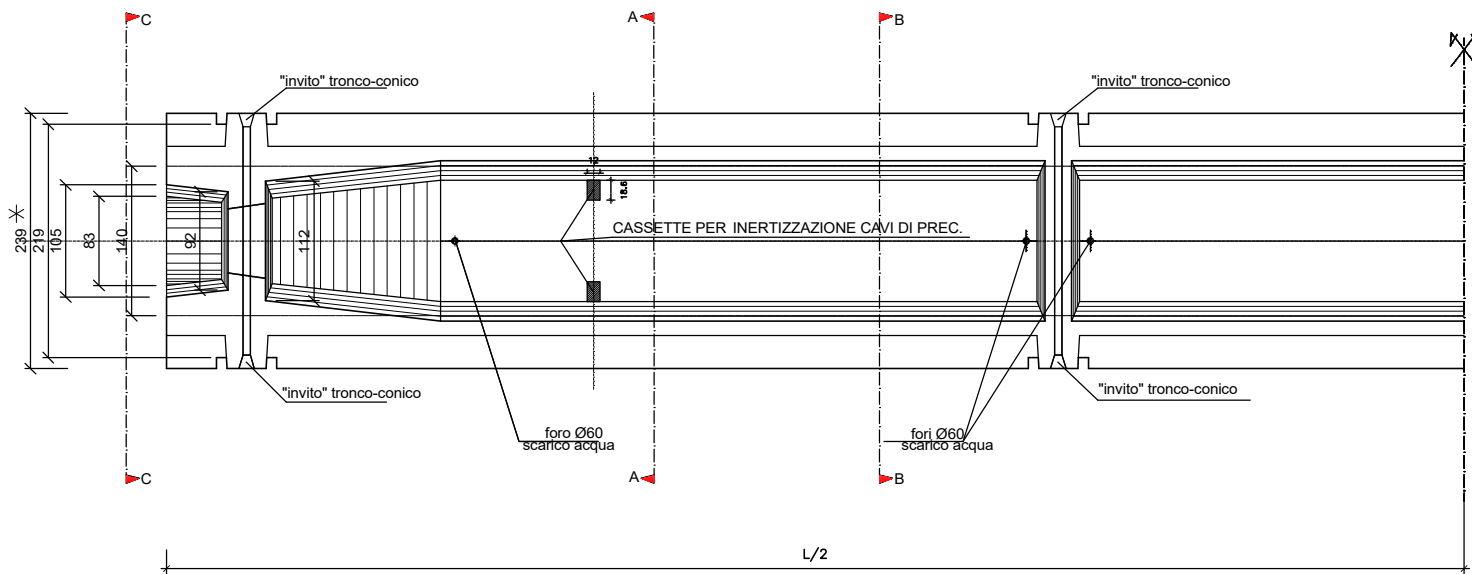
## Dettaglio Testata

LUNGH. TRAVE \_\_\_\_\_/2

1/2 PROSPETTO LONGITUDINALE

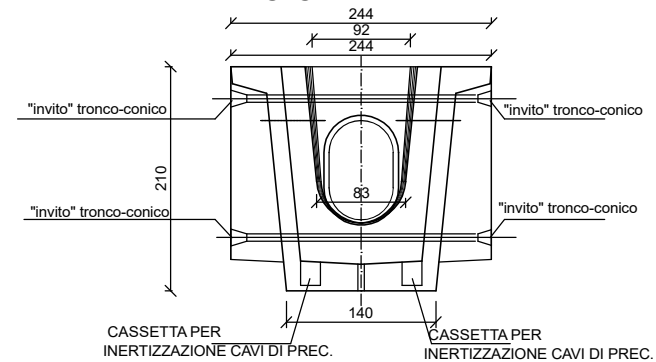


## 1/2 PIANTA

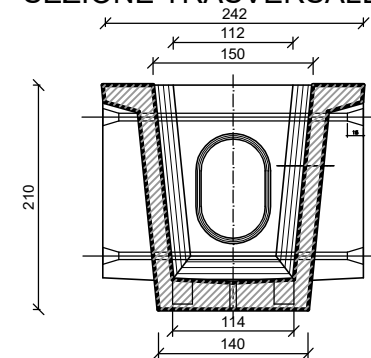


## sezione trasversale trave ingombro max cm 244

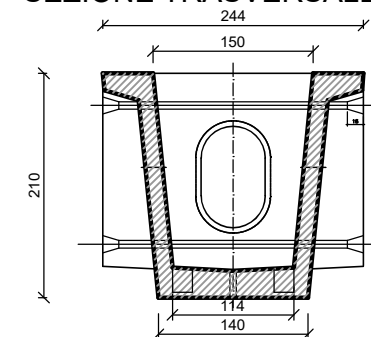
### VISTA C-C TESTATA TRAVE



### SEZIONE TRASVERSALE A-A



### SEZIONE TRASVERSALE B-B



\* N.B.: INGOMBRO SUPERIORE TRAVE ESTENSIBILE FINO A CM 244